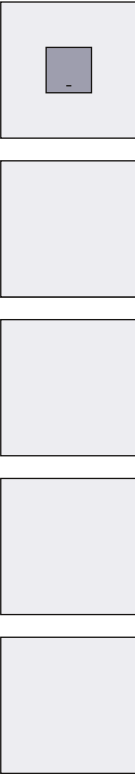






## Technical information



## Franzen THF "System Schröders"

**fire resistant single leaf ceiling flap**  
**T90 tested according to DIN 4102-5**

-  optional in combination as **smoke control flap**  
tested acc. to DIN 18095 RS-1
-  optional in combination as **acoustic performance flap**  
up to  $R_w (C, C_{tr}) = 42$  dB  
acc. to EN ISO 10140 / EN ISO 717-1
-  optional in combination with **increased air tightness**  
up to class 4 acc. to EN 12207
-  optional walkable



## Performance characteristics

### Fire resistance

T-90, "Allgemeine bauaufsichtliche Zulassung"  
Nr. Z-6.20-2061, DIBt Berlin

### Smoke control

tested acc. to DIN 18095 RS-1

### Combinable with additional performance characteristics:

#### Acoustic performance (optional)

up to RW (C;Ctr) = 42 (-1;-3) dB  
acc. to EN ISO 10140-1 / EN ISO 10140-2 / EN ISO 717

#### Thermal transmittance

UD-value  $\geq 1,6 \text{ W}/(\text{m}^2\text{K})$  acc. to EN ISO 10077-1

#### Air tightness (optional)

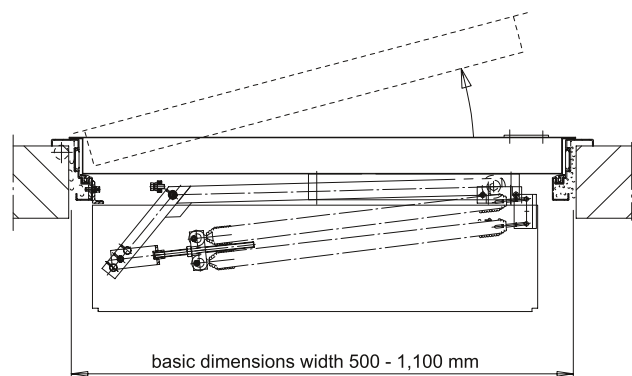
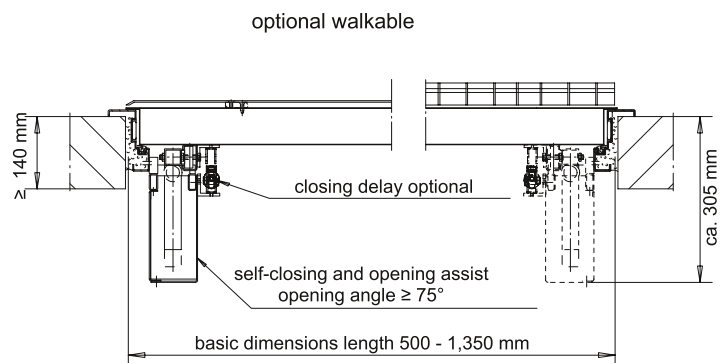
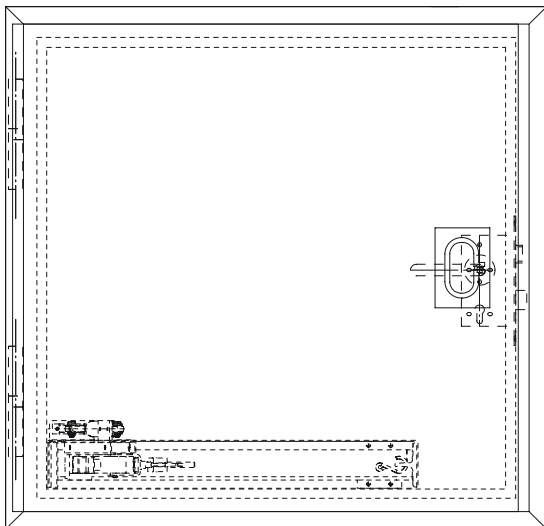
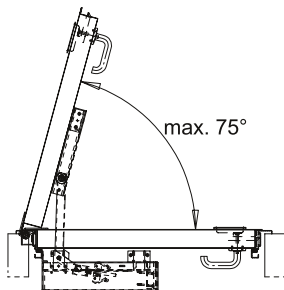
up to class 4 acc. to EN 12207 (up to 600 Pa)

#### Resistance to positive and negative pressure (optional)

up to 5.000 Pa acc. to DIN EN 12211

#### Explosion protection (optional)

for installation in potentially explosive areas (ATEX)



## Technical data

### Dimensions single leaf (basic dimensions)

width	from	500 mm	up to 1,100 mm
length	from	500 mm	up to 1,350 mm

### Flapleaf

leaf thickness 68 mm - smooth double-walled  
 plate thickness 1.0 mm  
 thin rebate design  
 optional insulation inlet full-face glued and pressed with cover plate, thus particularly plane and smooth door leaf

### Frame

frame system "ZNG" (see installation variants)  
 with flush clipped in Thelesol® fire protection strips) and elastic rubber seal  
 corner frame  
 optional enclosing frame  
 optional block frame

### Hinges

concealed door hinges  
 thus smooth surface without tripping edge

### Fittings

Top side: embedded folding ring shell  
 Lower side: handle

### Locking (single leaf)

single locking acc. to DIN 18250 / EN 12209  
 optional profile cylinder prepared (cylinder on-site)

### Walkability (optional)

with grating cover made of steel or aluminium  
 with checker plate 3 mm made of steel or aluminium

### Self-closing and opening assist

adjusted to the flap weight  
 - easy opening (max. opening angle 75°)  
 - closing speed regulation

### Closing delay (optional)

continuous adjustment of the closing process  
 enables unhindered passage  
 optional hold-open system acc. to DIN EN 14637

### Installation

in in fire-resistant ceilings made of reinforced concrete acc. to DIN 1045-1 (thk ≥ 140 mm)

### Marking

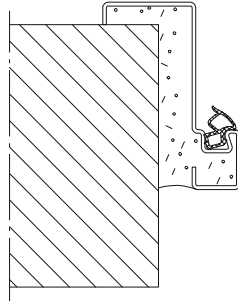
mark of conformity - "Ü"  
 according to German conformity mark regulation

### Optional

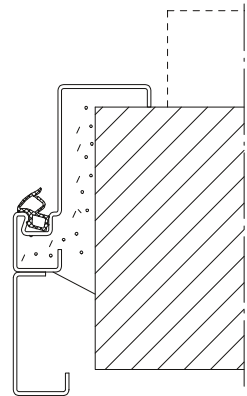
sock control  
 powder coating in RAL colours  
 special solutions acc. to request and customer requirements

# Installation variants

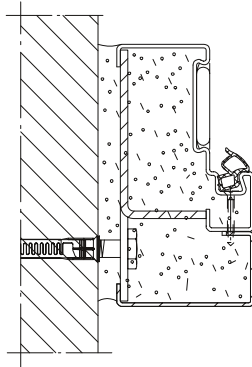
Installation in  
concrete



corner frame  
corner frame with  
supplementary frame

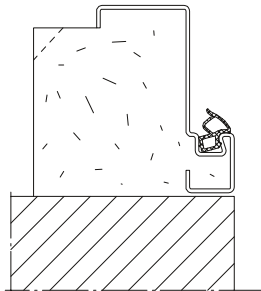


concrete  
- blunt installation

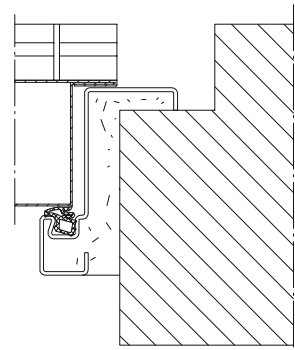
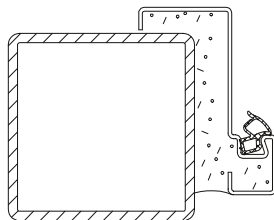


blockframe  
corner frame with  
supplementary frame

on concrete slab



optional walkable



**FRANZEN**  
Feuerschutztüren