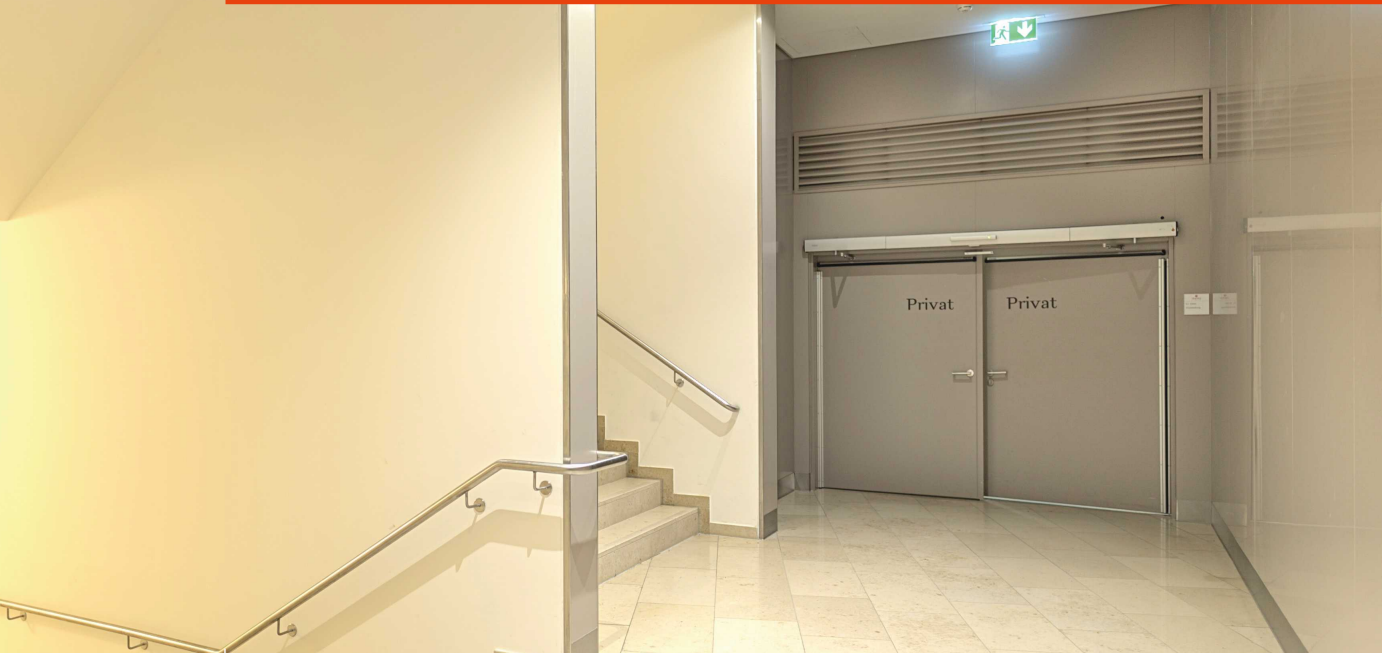


Technical information



Franzen RSN-1 / RSN-2 "System Schröders"

Smoke control steel door RS single leaf (RSN-1) and double leaf (RSN-2)

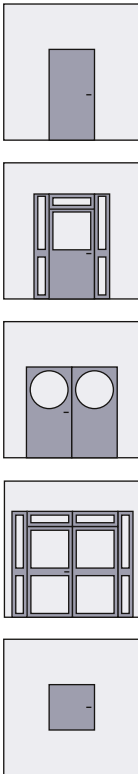
optional witch glas inset

optional in combination as

burglar resistance door
RC1 up to RC4 acc. to EN 1627

optional in combination with

increased air tightness
up to class 4 acc. to EN 12207



Performance characteristics

Smoke control (optional)
tested acc. to DIN 18095 RS-1 / -2

Combinable with additional performance characteristics:

Burglar resistance (optional)
RC4, RC3, RC2, RC1
acc. to DIN EN 1627 ff

Thermal transmittance (optional)
UD-value $\geq 1,2 \text{ W}/(\text{m}^2\text{K})$ acc. to EN ISO 10077-1

Air tightness (optional)
up to class 4 acc. to EN 12207 (up to 600 Pa)

Resistance to wind load (optional)
up to class C5 (up to 2,000 Pa) acc. to EN 12210

Watertightness (optional)
up to class 8A acc. to EN 12208

Resistance to positive and negative pressure (optional)
up to 5.000 Pa acc. to DIN EN 12211

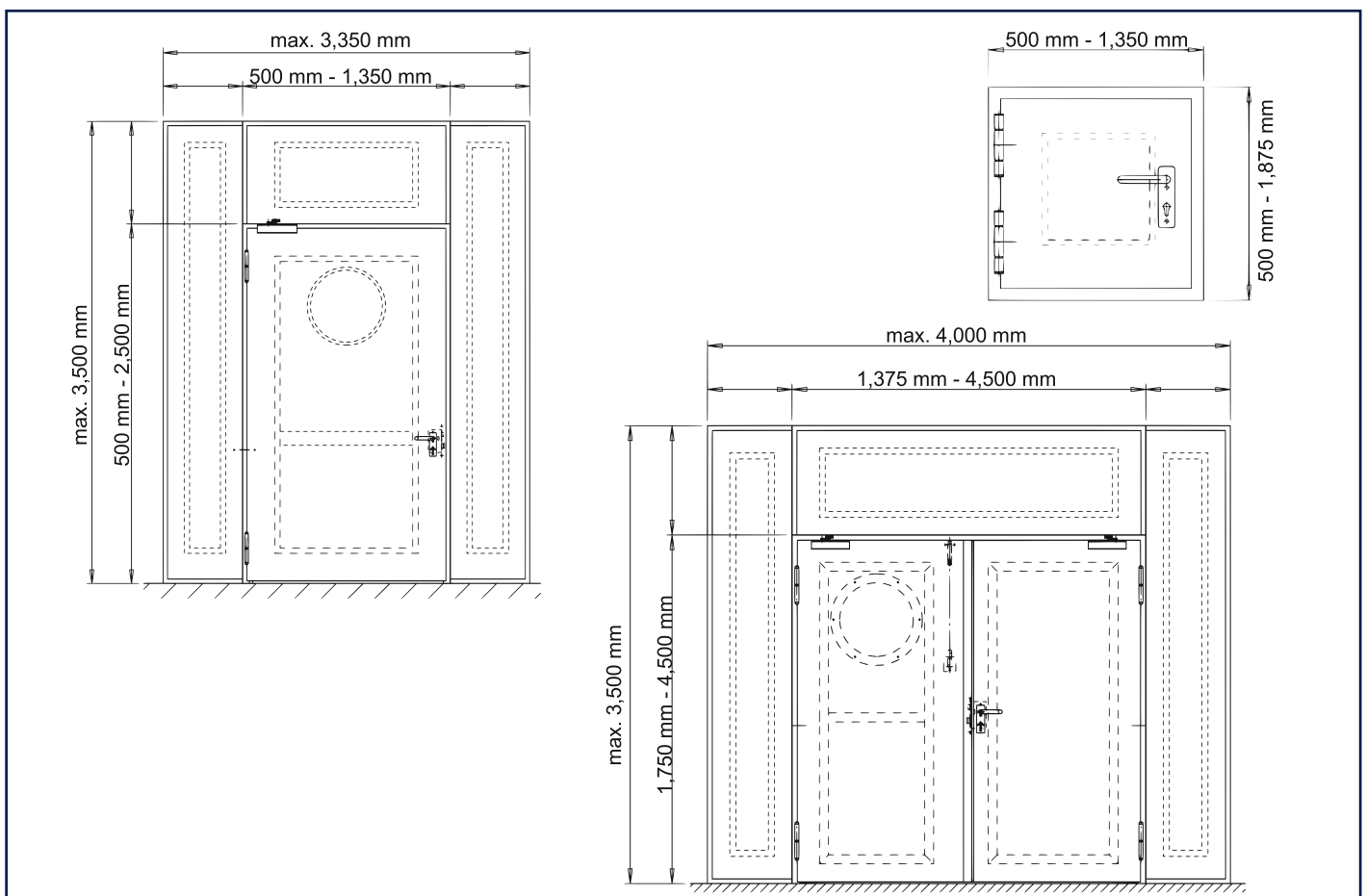
Flush with surface (optional)
flush-mounted design FLAT

Explosion protection (optional)
for installation in potentially explosive (ATEX)

Performance characteristics combinable with further Franzen door types "System Schröders":

Fire resistance (optional)
T90 with "allg. bauaufsichtlicher Zulassung"
(fire door Franzen TSN-11 / TSN-12)

T30 with "allg. bauaufsichtlicher Zulassung"
(fire door Franzen TSN-1 / TSN-2)



Technical data

Dimensions single leaf (basic dimensions)

width	from	500 mm	up to 1,350 mm
height	from	500 mm	up to 2,500 mm
with overhead panel	overall height		max. 3,500 mm
	height overhead panel		max. 1,000 mm
with side panel	total width		max. 3,350 mm
	width per side panel		max. 1,000 mm

Dimensions double leaf (basic dimensions)

width	from	1,375 mm	up to 4,500 mm
height	from	1,750 mm	up to 4,500 mm
with overhead panel	overall height		max. 3,500 mm
	height overhead panel		max. 1,000 mm
with side panel	total width		max. 4,000 mm
	width per side panel		max. 1,000 mm

Door leaf

leaf thickness 68 mm to 69 mm - smooth double-walled
 plate thickness 1.0 mm to 1.5 mm
 thin rebate design
 optional thick rebate design
 special honeycomb insert
 optional insulation inlet full-face glued and pressed with cover plate, thus particularly plane and smooth door leaf
 door leaf weight ca. 20 kg/m²

Frame

frame system or "ZG" (see installation variants)
 with elastic rubber seal
 corner frame
 optional enclosing frame
 optional block frame

Floor seal

optional lowerable floor seal or sliding seal

Glas inset (optional)

glass dimensions and -form variable
 minimum frieze width: 90 mm
 optional with port-hole (ø ca. 450 mm clear view)
 optional in overhead panel
 glass inset bars with concealed screw connection (for rectangular glass inset)

Hinges

2/3-part KO door hinges
 with patented easy-running bearings as easy running doors
 optional door hinge with 3D adjustment

Fittings single leaf

optional any approved handle set
 acc. to EN 1906 resp. EN 179
 optional panic bar handle or push bar acc. to EN 1125

Fittings double leaf

active leaf
 optional any approved handle set
 acc. to EN 1906 resp. EN 179
 optional panic bar handle or push bar acc. to EN 1125
 for version RC: protective fitting ES-1 to ES-3

Locking single leaf

single locking acc. to DIN 18250
 profile cylinder prepared (cylinder on-site)
 securing pins
 for version RC4: lock combination with triple locking
 optional panic locking

Locking double leaf

active leaf
 single locking acc. to DIN 18250, depending on version
 multi-point locking
 profile cylinder prepared (cylinder on-site)
 fixed leaf
 internal snap bolt (locking upwards)
 depending on version, with locking upwards and downwards (rebate shoot bolt, shoot bolt lock)
 securing pins at both leaves
 optional panic locking according to EN 179 resp. EN 1125

Self-closing single leaf

door closer acc. to DIN EN 1154
 optional spring hinge for smaller doors / flaps
 optional hold-open system acc. to DIN EN 14637

Self-closing double leaf

both leaves with door closer acc. to DIN EN 1154 resp. EN1155
 with door closing sequence control acc. to EN1158
 optional hold-open system acc. to DIN EN 14637

Installation

in masonry	(thk ≥ 115 mm)
in concrete	(thk ≥ 100 mm)
in aerated concrete	(thk ≥ 150 mm)
in mounting walls min. F30	(thk ≥ 100 mm)
optional blunt installation in soffit	
optional installation on the wall plate	

Marking

mark of conformity - "Ü"
 acc. to German conformity mark regulation

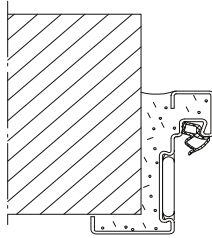
Optional

sock control
 automated opening
 motor locks (also in 3-way locking)
 powder coating in RAL colours
 prison cell doors (special locking and food flap)
 special solutions acc. to request and customer requirements

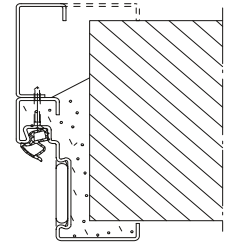
Installation variants

Installation in

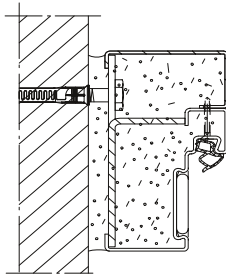
masonry /
concrete



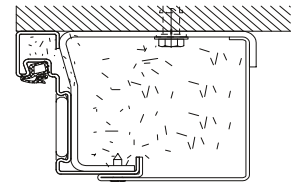
corner frame
corner frame with
supplementary frame



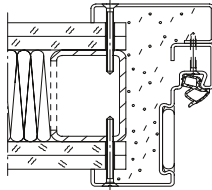
masonry /
concrete



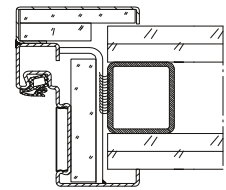
block frame
corner frame with
supplementary frame



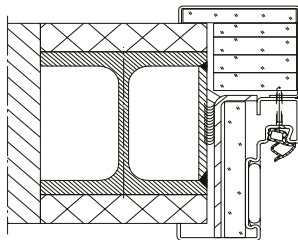
mounting walls



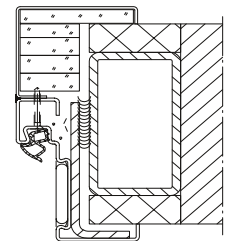
enclosing frame
corner frame with
supplementary frame



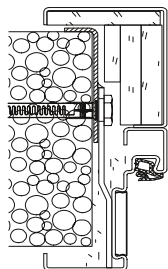
steel columns /
steel supports



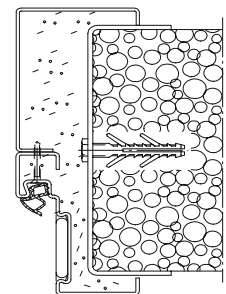
enclosing frame
corner frame with
supplementary frame



aerated concrete



enclosing frame
corner frame with
supplementary frame



FRANZEN
Feuerschutztüren