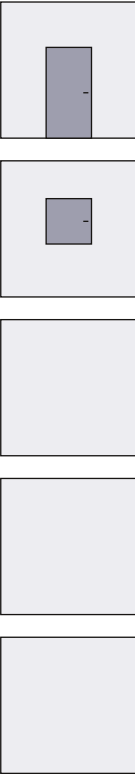




Technical information



Franzen EIS-11 "System Schröders"

CE marked highly fire-resistant steel door
EI₂120-S_a-C5 acc. to EN 16034, single leaf

-  optional in combination as **smoke control door**
S_a / S₂₀₀ acc. to EN 16034
-  optional in combination with **increased air tightness**
up to class 4 acc. to EN 12207



Performance characteristics

CE-marked

Fire resistance

EI₂120 / E 120 / EW 60 tested acc. to EN 1634-1
as gate acc. to DIN EN 13241-1
as external door acc. to DIN EN 14351-1

Combinable with additional performance characteristics:

Smoke control (optional)

S_a / S₂₀₀ tested acc. to EN 1634-3

Thermal transmittance (optional)

UD-value $\geq 2,7 \text{ W}/(\text{m}^2\text{K})$ acc. to EN ISO 10077-1

Air tightness (optional)

up to class 4 acc. to EN 12207 (up to 600 Pa)

Resistance to wind load (optional)

up to class C5 (up to 2,000 Pa) acc. to EN 12210

Watertightness (optional)

up to class 8A acc. to EN 12208

Resistance to positive and negative pressure (optional)
up to 5.000 Pa acc. to DIN EN 12211

Behaviour between different climates (optional)
class 2 (d + e) acc. to EN 12219 (deflection)

Ability to release (optional)

hold-open device according to DIN EN 14637

Ability to release (optional)

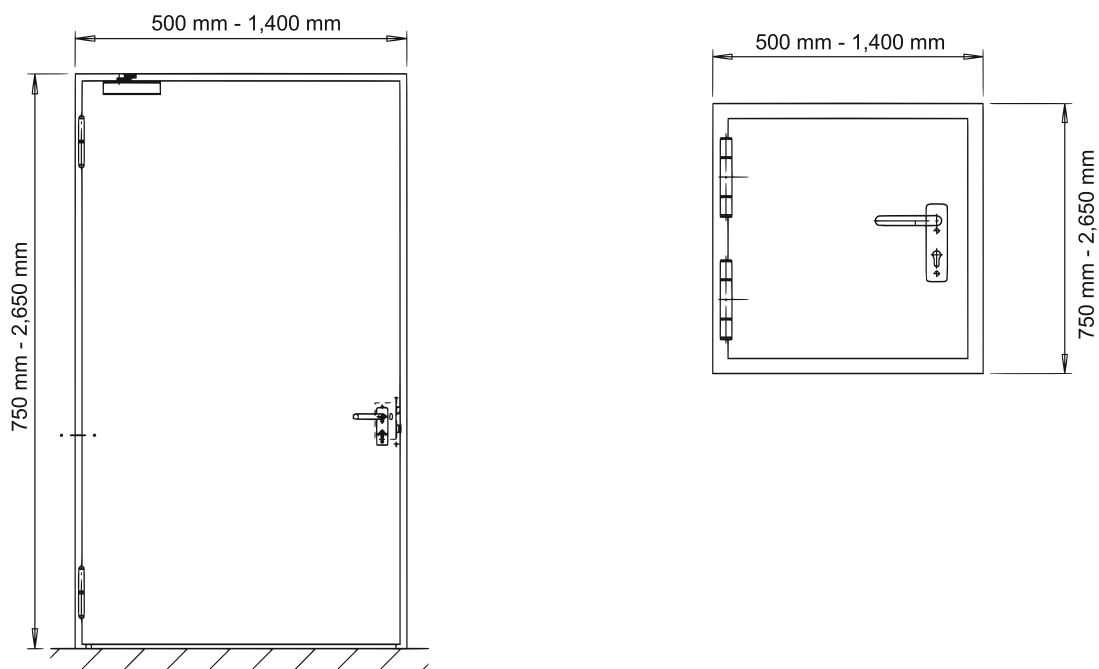
acc. to DIN EN 16034 hold-open device
acc. to DIN EN 14637
acc. to DIN EN 14351-1 proven for doors
in escape and rescue routes

Flush with surface (optional)

flush-mounted design FLAT

Explosion protection (optional)

for installation in potentially explosive areas (ATEX)



Technical data

Dimensions (rough building dimension)

width	from 500 mm	up to 1,400 mm
height	from 750 mm	up to 2,650 mm

Door leaf

leaf thickness 68 mm to 69 mm - smooth double-walled
 plate thickness 1.0 mm to 1.5 mm
 thin rebate design
 optional thick rebate design
 optional insulation inlet full-face glued and pressed with cover plate thus particularly plane and smooth door leaf

Thelesol® 120 fire protection strips on the door leaf edges

Frame

framesystem "ZNG" (see installation variants)
 with flush clipped in Thelesol® fire protection strips and elastic rubber seal
 optional with elastic smoke control seal
 corner frame
 optional enclosing frame
 optional block frame

Floor seal

required for smoke control, air tightness
 optional lowerable floor seal or sliding seal (patented)

Hinges

2/3-part KO door hinges
 with patented easy-running bearings as easy running doors
 optional door hinge with 3D adjustment

Fittings

optional any approved handle set
 acc. to EN 1906 resp. EN 179
 optional panic bar handle or push bar acc. to EN 1125

Locking

single locking acc. to EN 12209,
 depending on version multi-point locking
 profile cylinder prepared (cylinder on-site)
 securing pins
 optional panic locking acc. to EN 179 resp. EN 1125

Self-closing

door closer according to DIN EN 1154
 optional spring hinge for smaller doors / flaps

Installation

in masonry
 in concrete
 optional blunt installation in soffit
 optional installation on the wall plate
 approved for installation at great heights
 (installation not at floor level: height on one or both sides
 > 500 mm above ground level - e.g. as manhole door/flap)
 with lower fire and smoke seal - also thresholdless

Marking

CE-marking for fire doors acc. to EN 16034

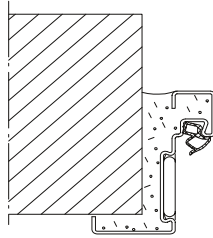
Optional

sock control
 automated opening
 motor locks (also in 3-way locking)
 powder coating in RAL colours
 prison cell doors (special locking and food flap)
 special solutions according to request and customer requirements

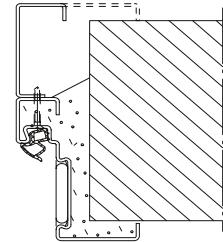
Installation variants

Installation in

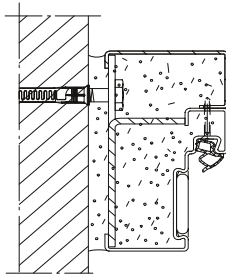
masonry /
concrete



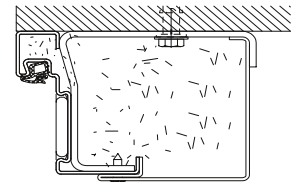
corner frame
corner frame with
supplementary frame



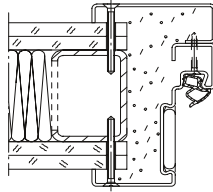
masonry /
concrete



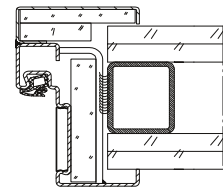
block frame
corner frame with
supplementary frame



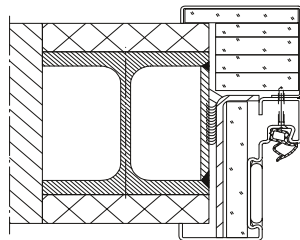
mounting walls



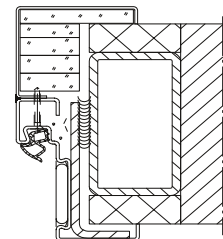
enclosing frame
corner frame with
supplementary frame



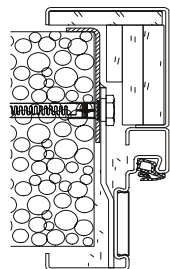
steel columns /
steel supports



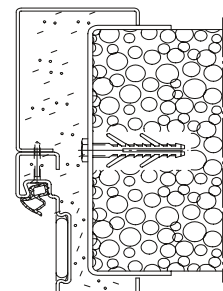
enclosing frame
corner frame with
supplementary frame



aerated concrete



enclosing frame
corner frame with
supplementary frame



FRANZEN
Feuerschutztüren